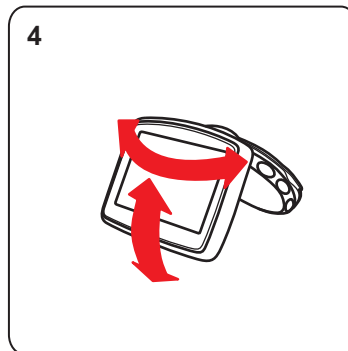
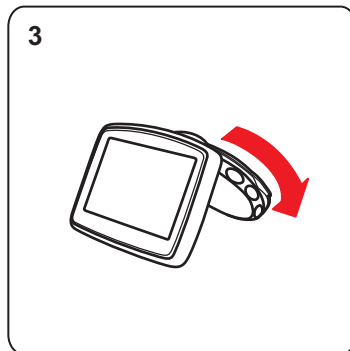
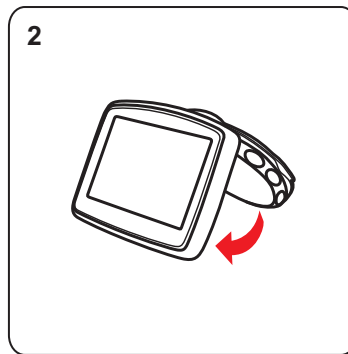
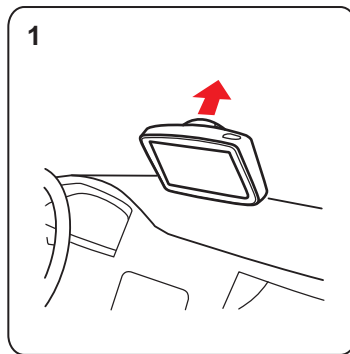


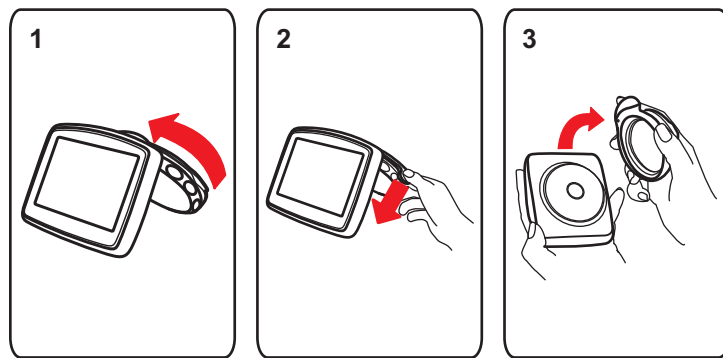
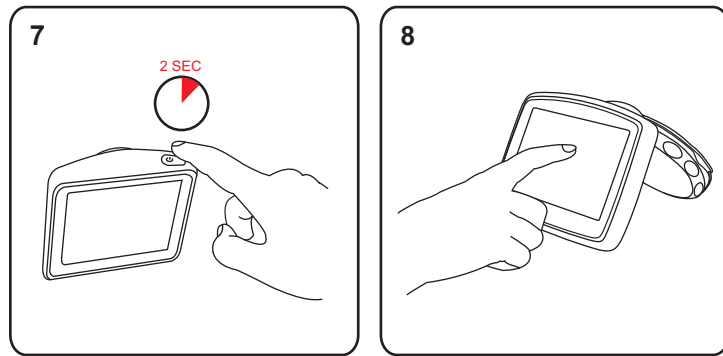
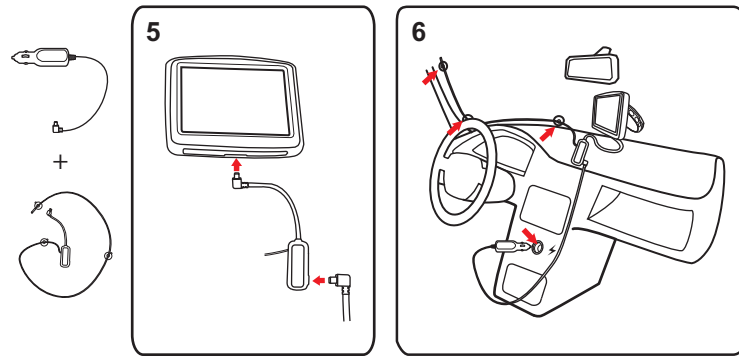
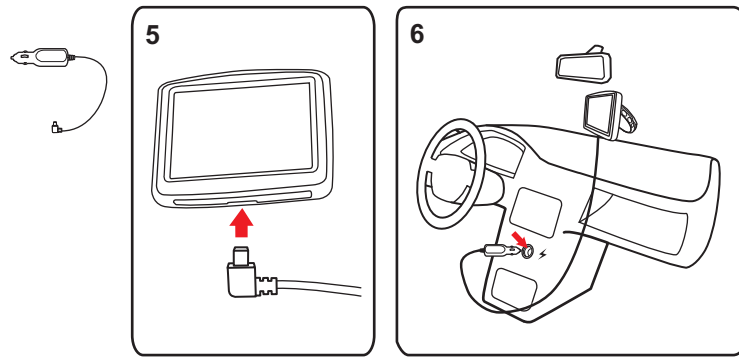
---

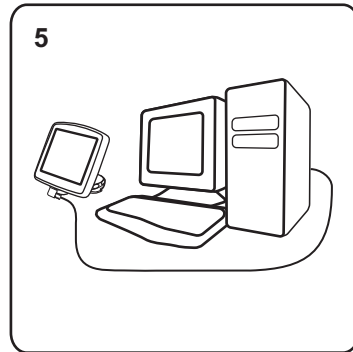
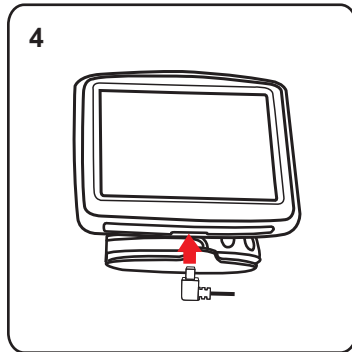
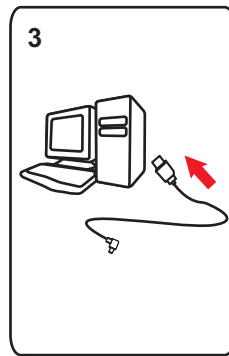
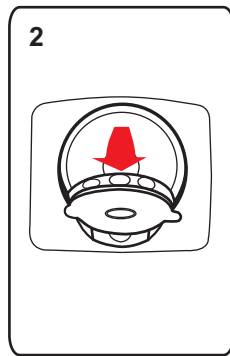
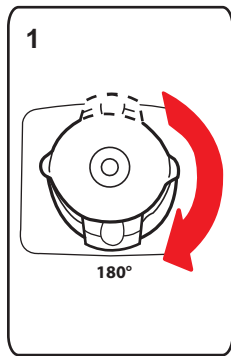
# TomTom XL

# 1. Installation

---



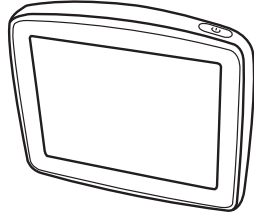




## 2. What's in the box

---

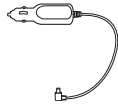
a Your TomTom XL



b EasyPort™ holder



c Car charger



d USB cable



e Documentation pack



## 3. Before you start

---

### Switching on and off

Install your TomTom XL navigation device in your car following the instructions in the installation section at the start of this book.

To switch on your navigation device, press and hold the On/Off button until you see the start-up screen. The first time you switch on your device, it may take a short time to start.

To set up your device you need to answer a few questions by tapping the screen.

### Device not starting

In rare cases, your TomTom XL navigation device may not start correctly or may stop responding to your taps.

First, check that the battery is properly charged. To charge the battery, connect your device to the car charger. It can take up to 2 hours to fully charge the battery.

If this does not solve the problem, you can reset the device. To do this, press and hold the On/Off button for 15 seconds and release the button when your device begins to restart.

### Charging your TomTom XL

Before you use your XL for the first time, it's a good idea to charge it fully.

The battery in your TomTom XL navigation device charges when you connect it to the car charger or to your computer.

There is no charging light on your XL. To check the battery status and see when your XL is charging, switch on your device and tap the bottom right-hand corner of the screen in the Driving View. The battery status is shown on the next page.

When you connect your device to a computer, you are asked if you want to connect to the computer. If you select **No** and then do not tap the screen within three minutes, the device will automatically switch off. This happens so that the battery can charge faster.

---

**Note:** You should plug the USB connector directly into a USB port on your computer and not into a USB hub or USB port on a keyboard or monitor.

---

## Battery notes

The battery in your TomTom XL navigation device charges when you connect it to the car charger or to your computer.

When you connect your device to a computer, you are asked if you want to connect to the computer. If you select **No** and then do not tap the screen within three minutes, the device will automatically switch off. This happens so that the battery can charge faster.

---

**Note:** You should plug the USB connector directly into a USB port on your computer and not into a USB hub or USB port on a keyboard or monitor.

---

## GPS reception

When you first start your TomTom XL navigation device, the device may need a few minutes to determine your GPS position and show your current position on the map. In future, your position will be found much faster, usually within a few seconds.

To ensure reception of a strong GPS signal, you should use your device outdoors. Large objects such as tall buildings can sometimes interfere with reception.

## Take care of your device

Never leave your TomTom XL navigation device or accessories on view when you leave the car or they may become an easy target for thieves.

You can set a password for your device which must be entered every time you start it.

It is important to take care of your device.

- Your device is not designed for use in extreme temperatures and any such exposure may cause permanent damage.
- Do not open the casing of your device under any circumstances. Doing so may be dangerous and will invalidate the warranty.
- Wipe or dry the screen of your device using a soft cloth. Do not use any liquid cleaners.

## 4. Safety

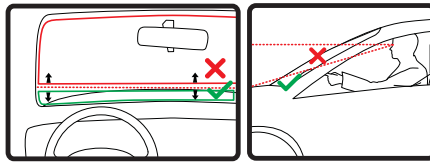
---

### Positioning the dock

Consider carefully where to attach the dock in your car. The dock should not block or interfere in any way with the following:

- Your view of the road
- Any of the controls in your car
- Any of your mirrors
- The airbag

You should be able to reach your navigation device easily when it is in the dock without leaning or stretching. The diagrams show where you can safely attach the dock.



You can attach the dock to the windscreen, side window or use a Dashboard Mount Disk to attach the dock to your dashboard. TomTom also offers alternative mounting solutions for your TomTom navigation device. For more information about Dashboard Mount Disks and alternative mounting solutions, go to [www.tomtom.com/accessories](http://www.tomtom.com/accessories).

### Installing the dock

Make sure that both the holder and your window are clean and dry.

1. Press the suction cup firmly against the window on an area where the glass is flat.
2. Twist the base of the EasyPort holder in a clockwise direction to lock the holder in place.

For detailed instructions, check the installation section at the start of this manual.

### Safety preferences



We recommend using the safety preferences to make your driving as safe as possible. The safety preferences include, for example, the following options:

- Hide most menu options when driving
- Show safety reminders
- Warn when driving faster than allowed



## TomTom Safety Alerts



The TomTom Safety Alerts service warns you about a variety of locations including:

- Safety camera locations.
- Accident blackspot locations.
- Mobile safety camera locations.
- Average speed camera locations.
- Toll road camera locations.
- Traffic light camera locations.

---

**Important:** Regularly connect your navigation device to TomTom HOME to update the list of locations for all Safety Alerts. If a wireless connection is available for your device, mobile safety camera locations can be sent to your device using a wireless connection.

---

When a safety camera location is shown on the map, a warning sound is played to warn you that you are approaching an area where a safety camera is located.

If you discover a location that has a safety camera but you receive no warning, you can report the new location to TomTom using your XL.

## 5. Making your first journey

---

Planning a route with your TomTom XL navigation device is easy. To plan a route, follow the steps below.

---

**Important:** For safety reasons, you should always plan a route before you start your journey.

---

1. Tap the screen to bring up the Main Menu.

---

*Note: The buttons on your navigation device are shown in full colour unless a button is currently unavailable. For example, the button named **Find alternative** in the Main Menu is not available until you have planned a route.*

---

2. Tap **Navigate to...**



3. Tap **Address**.



When you enter an address, you can choose from the following options:

- **City centre** - tap this button to set your destination as the centre of a city or town.
- **Street and house number** - tap this button to set an exact address as your destination.
- **Postcode** - tap this button to enter a postcode as your destination.

---

*Note: You can enter a postcode for any country. In some countries, postcodes are detailed enough to identify a house on their own. In other countries you can enter a postcode to identify a town or area. You will then have to enter a street and house number.*

---

- **Crossing or intersection** - tap this button to set your destination as the point where two streets meet.

In this example, we will enter an exact address.

4. Tap **Street and house number**.




---

***Note:** When planning a trip for the first time your navigation device asks you to choose a state or country. Your choice is saved and used for all routes you plan.*

*You can change this setting at any time by tapping the flag.*

---

5. Start to type the name of the town where you want to go.



As you type, the names of the towns that match what you have typed are shown. When your destination appears in the list, tap the name of the town to set the destination.

6. Start to type the street name and tap on the street when it appears in the list.

As with the name of the town, the names of the streets that match what you have typed are shown. When your destination appears in the list, tap the name of the street to set the destination.

7. Enter the house number and then tap **Done**.



8. Your navigation device asks if you need to arrive at a particular time. For this exercise, tap **NO**.

The route is calculated by your device using IQ Routes™.

IQ Routes is used to plan the best possible route taking into account the real average speeds measured on the roads.

9. When the route has been calculated, tap **Done**.

Your TomTom XL navigation device will warn you about any traffic delays and immediately begin to guide you to your destination, using both spoken instructions and on-screen directions.



## Arrival times

When you plan a route, your TomTom XL asks you if you need to arrive at a particular time.

Tap **YES** to enter a preferred arrival time.

Your XL calculates your arrival time and shows you whether you will arrive on time.

You can also use this information to work out when you need to leave. If your XL shows that you will arrive 30 minutes early, you can wait and leave in 30 minutes time, rather than arrive early.

Your arrival time is constantly recalculated during your journey. The status bar shows whether you will arrive on time or if you are going to be late, as shown below:



You will arrive 55 minutes before the arrival time you entered.

If the estimated arrival time is more than five minutes before the time you entered, it is shown in green.



You will arrive 3 minutes before the arrival time you entered.

If the estimated arrival time is less than 5 minutes before the time you entered, it is shown in yellow.



You will arrive 19 minutes late.

If the estimated arrival time is later than the time you entered, it is shown in red.



Status bar preferences

Tap **Status bar preferences** in the Preferences menu, to enable or disable arrival time notifications.

Select the required options on the first menu screen and then tap **Done**.

To enable arrival time notifications, select **Show leeway to arrival time**.

## Other navigation options

When you tap **Navigate to...**, you can set your destination in many ways, not just by entering the address. The other options are listed below:



### Local search

Tap this button to use TomTom Local Search with Google search to help you find shops and businesses in and around your current location.

You can choose to search for shops and businesses near you, near your destination, near any other destination or in a city.

For example, if you are looking for a swimming pool near your current location, enter 'swimming pool' and choose the best search result.

---



### Home

Tap this button to navigate to your Home location.

You will probably use this button more than any other.

---



### Favourite

Tap this button to select a Favourite as your destination.

---



### Address

Tap this button to enter an address as your destination.

---



### Recent destination

Tap this button to select your destination from a list of places you have recently used as destinations.

---



### Point of Interest

Tap this button to navigate to a Point of Interest (POI).

---



### Point on map

Tap this button to select a point on the map as your destination using the map browser.

---



### Latitude Longitude

Tap this button to enter a destination using latitude and longitude values.

---



### Position of last stop

Tap this button to select your last recorded position, as your destination.

---

## Planning a route in advance

You can use your XL to plan a route in advance, selecting your starting point and your destination.

Here are some more reasons to plan a route in advance:

- Find out how long a journey is going to take before you start.

You can also compare journey times for the same route at different times of the day or on different days of the week. Your TomTom XL uses IQ Routes when planning a route. IQ Routes calculates routes based on the real average speeds measured on roads.

- Study the route of a journey you are planning.
- Check a route for someone who is coming to visit you and then explain the route to them in detail.

To plan a route in advance, follow these steps:

1. Tap the screen to bring up the main menu.
2. Tap the arrow button to move to the next menu screen and tap **Prepare route**.



Prepare route

3. Select the starting point for your journey in the same way that you would select your destination.
4. Set the destination for your journey.
5. Choose the type of route that should be planned.
  - **Fastest route** - the route which takes the least time.
  - **Shortest route** - the shortest distance between the locations you set. This may not be the quickest route, especially if the shortest route is through a town or city.
  - **Avoid motorways** - a route which avoids motorways.
  - **Walking route** - a route designed for making the journey on foot.
  - **Bicycle route** - a route designed for making the journey on a bicycle.
  - **Limited speed** - a route for a vehicle which can only be driven at a limited speed. You have to specify the maximum speed.
6. Choose when you will make the journey you are planning. There are three options:
  - **Now**
  - **Specific date and time** - you will be asked to enter the date and time.
  - **No specific date and time**

If you select either **Now** or **Specific date and time**, your XL uses IQ Routes to work out the best possible route at that time, using the real average speeds measured on roads. In this way you can compare how long a journey takes at different times of day, or on different days of the week.

7. Your TomTom XL plans the route between the two locations you selected.

## More information about a route

You can access these options for the route you last planned by tapping the **Details** button on the route summary screen.

You can then select from the following options:



**Browse as text**

Tap this button for a list of all the turn instructions on the route.

This is very useful if you need to explain a route to someone else.



**Browse as images**

Tap this button to see each turn in the journey. Tap the right and left arrows to move forwards and backwards through the journey.

Tap the screen to turn off the 3D display and view the map from above.



**Browse map of route**

Tap this button to see an overview of the route using the map browser.



**Show route demo**

Tap this button to watch a demo of the journey. You can interrupt the demo at any time by tapping the screen.



**Show route summary**

Tap this button to open the route summary screen.



**View route**

---

Tap this button to see your route.

## 6. Driving View

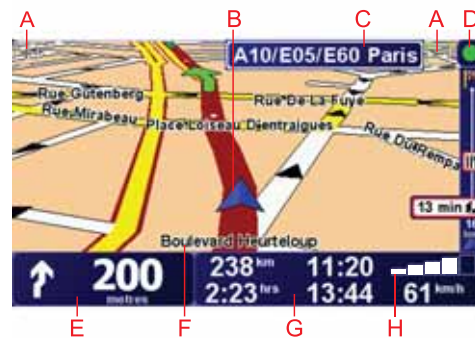
When your TomTom XL starts, you are shown the Driving View along with detailed information about your current location.

Tap the centre of the screen at any time to open the Main Menu.

---

**Note:** The Driving View is shown in black and white until your XL locates your current position.

---



A Tap + and - to zoom in and out.

B Quick menu - switch this on in the Preferences menu.

C Your current position.

D The name of the next major road or road sign information, if applicable.

E Navigation instruction for the road ahead.

Tap this area to repeat the last spoken instruction and to change the volume.

F The name of the street you are on.

G Information about your journey such as journey time, remaining distance and arrival time.

To change the information shown, tap **Status bar preferences** in the **Preferences** menu.

H GPS signal strength.



## 7. Advanced Lane Guidance

### Advanced Lane Guidance

Your TomTom XL helps you prepare for motorway exits and junctions by showing you which lane you should be in.

---

*Note: This information is not available for all junctions or in all countries.*

---

For some exits and junctions, an image shows the turn and the lane you should take.



To turn the images off, tap **Hide lane images** in the Preferences menu.

For other exits and junctions, your XL shows the lane you should take in the Status bar. To turn this guidance off, tap **Change preferences** in the Main Menu, then tap **Status bar preferences**. Clear the checkbox for **Show lane guidance**.



## 8. Finding alternative routes

---

Once you have planned a route, you may want to change something about the route, without changing your destination.

### Why change the route?

Maybe for one of these reasons:

- You can see a roadblock or a line of traffic ahead.
- You want to travel via a particular location, to pick someone up, stop for lunch or fill up with petrol.
- You want to avoid a difficult junction or a road you don't like.



Find alternative...

Tap **Find alternative...** in the Main Menu to change the route that is currently planned.

The **Find alternative...** button is also shown in the route summary screen after you plan a route.



Calculate alternative

Tap this button to calculate an alternative to the route already planned.

Your XL will look for another route from your current location to your destination.

If you decide you would prefer to use the original route after all, tap **Recalculate original**.

#### Why would I need to do this?

Apart from the roads near your position and near your destination, the new route will use totally different roads to reach your destination. This is an easy way of calculating a totally different route.



Avoid roadblock

Tap this button if you can see a roadblock or a line of traffic ahead. You then have to choose how much of the route ahead you want to avoid.

Choose from the different options: 100m, 500m, 2000m, 5000m. Your XL will recalculate your route avoiding the section of the route for the distance you selected.

Don't forget that once a new route is calculated, you may have to turn off the road you are on very soon.

If the roadblock suddenly clears, tap **Recalculate original** to return to your original route.



**Travel via...**

Tap this button to change your route so that it passes a particular location, perhaps to pick someone up on the way. When you do this, a marker is shown on the map for the location you choose the travel via.

You choose the location you want to pass in the same way as you choose a destination. So you can select from all the same options: for example, **Address, Favourite, Point of Interest** and **Point on map**.

Your XL will calculate a new route to your destination that passes the location you chose. Unlike your final destination, your XL does not inform you when you pass by this location.

Using this button, you can only travel via one location. If you want to pass more than one, use an Itinerary.



**Recalculate original**

Tap this button to return to the original route without deviations to avoid roadblocks or travelling via particular locations.



**Avoid part of route**

Tap this button to avoid a part of the route. Use this button if you see that your route includes a road or junction you don't like, or which is well-known for traffic problems.

You then choose the road you want to avoid from a list of the roads on your route.



**Minimise delays**

Tap this button to recalculate your route so that it avoids traffic problems as much as possible. Your XL will check if there are any traffic problems on your route and work out the best route to avoid the problems.

---

***Note: This button is only available with TomTom Traffic enabled.***

---

## 9. Browse Map

To look at the map in the same way as you might look at a traditional paper map, tap **Browse map** in the Main Menu.

You can move the map by touching the screen and moving your finger across the screen.



A The scale bar

B Traffic - current traffic incidents. Use the Options button to select whether traffic information is shown on the map. When traffic information is shown on the map, POIs and Favourites are not shown.

C Marker

Markers point to your current location, your home location and your destination. The marker shows the distance to the location.

Tap a marker to centre the map on the location pointed to by the marker.

You can also set your own marker. Tap the cursor button, then tap **Set marker position** to place a marker at the cursor position.

D GPS button

Tap this button to centre the map on your current position.

E Options

F The cursor

G The Find button

Tap this button to find specific addresses.

H The Cursor button

Tap this button to navigate to the cursor position, make a Favourite of the cursor position, or find a Point of Interest near the cursor position.

I The zoom bar

Zoom in and out by moving the slider.

## Options

Tap the **Options** button to set the information shown on the map. You can choose to show the following information:

- **Points of interest.** Tap **POI** below the list of options to select which POIs are shown.
- **Favourites**
- **Traffic** - when traffic information is shown on the map, POIs and Favourites are not shown.

Tap **Advanced** to show or hide the following information:

- **Names**
- **Markers** - markers point to your current location, your home location and your destination. The marker shows the distance to the location. Markers are shown when the location they point to are off the screen.

Tap a marker to centre the map on the location pointed to by the marker.

You can also set your own marker. Tap the cursor button, then tap **Set marker position** to place a marker at the cursor position.

- **Coordinates**

## Cursor position

Position the cursor at a location on the map, tap the **Cursor** button and then tap one of the following buttons to use the cursor location:



**Navigate there**

Tap this button to navigate to the cursor position. Your XL navigation device calculates the route.



**Set marker position**

Tap this button to place a marker at the cursor position.



**Find POI nearby**

Tap this button to find a POI near the cursor position. For example, if you have found a restaurant, you can search for a parking garage nearby.



**Correct location**

Tap this button to correct the location shown at the cursor position.



**Add as Favourite**

---

Tap this button to create a Favourite at the cursor position.



**Add as POI**

Tap this button to create a POI at the cursor position.



**Centre on  
map**

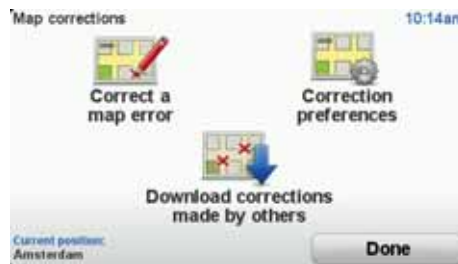
Tap this button to centre the map on the cursor position.

---

## 10. TomTom Map Share™

---

With TomTom Map Share, you can correct errors on your map and share those corrections with other people in the TomTom Map Share community, as well as receiving corrections made by others.



If you find a street that has recently been blocked to traffic which was open before, you can use Map Share to correct your map and then share the correction with other Map Share members.

You can use Map Share to send and receive map corrections during the first year after the map's release date. This means that one year after the release date, you will no longer be able to send or receive map corrections for that version of the map - You will still be able to make corrections to your own map for use on your own device.

You choose the type of corrections you want and each time you connect your TomTom XL to TomTom HOME, the map is automatically updated.

---

**Note:** TomTom Map Share is not available in all regions. For more information, go to [tomtom.com/mapshare](http://tomtom.com/mapshare)

---

### Map corrections

There are two types of map correction:

- Corrections that are immediately shown on the map. These include, changing the traffic flow of a street, blocking or renaming a street and adding or editing POIs.

This type of change is immediately shown on your own map. You can hide these corrections at any time in the Map Share preferences menu.

- Corrections that are reported to TomTom but not shown immediately on your map. These include, missing streets, errors in motorway entrances and exits and missing roundabouts.

This type of correction is investigated by TomTom and once verified, is included in the next map release. These corrections are therefore not shared with the Map Share community.

## Making a map correction

---

**Important:** For safety reasons, you should only mark a location when you are driving. Do not enter the full details of an error while you are driving.

---



Correct a map error

1. Tap **Map corrections** in the Main Menu.
2. Tap **Correct a map error**.  
A list of possible map corrections is shown.
3. Select the type of correction you want to report.

---

**Note:** If you tap **Add missing POI** or **Report other error** you will be asked for some additional information before the next step.

---

4. Select the method you want to use for selecting the location of the correction.
5. When you have found the location, tap **Done**.
6. Enter correction or confirmation of correction now.

## Receiving the latest map updates

When you connect your TomTom XL to your computer, TomTom HOME automatically downloads any available map corrections and sends any changes you have made, to the Map Share community.

There are several types of corrections which can be set in the Correction preferences menu.

## Marking a map error while on the move

---

**Important:** For safety reasons, you should only mark a location when you are driving. Do not enter the full details of an error while you are driving.

---

If you notice an item on your map that needs attention, you can mark the location using the **Report** button and then enter the details when you are no longer driving.

To show the **Report** button in the Driving View or in the quick menu, do the following:

1. Tap **Map corrections** in the Main Menu.

---

**Tip:** If you cannot see the **Map corrections** button in the Main Menu, tap **Show ALL menu options** in the Preferences menu.

---

2. Tap **Correction preferences**.
3. Tap **Done** and then tap **Done** again.
4. Select **Show report button**, then tap **Done**.

The **Report** button is shown on the left-hand side of the Driving View. After you mark a location, you can add more information about the change when you open the **Map corrections** menu.

For example, you are driving to a friend's house and you notice that the name of the street you are on is different from the one on your map. To report the



change, tap the **Report** button and your XL will save your current location. You can then send the correction to TomTom Map Share when you have finished your journey.

## TomTom Map Share community

To join the Map Share community, do the following:

1. Tap **Map corrections** in the Main Menu.

---

**Tip:** If you cannot see the **Map corrections** button in the Main Menu, tap **Show ALL menu options** in the Preferences menu.

---

2. Tap **Download corrections made by others**.
3. Tap **Join**.

When you connect your XL to your computer, TomTom HOME downloads new corrections and sends your corrections to the Map Share community.

---

**Important:** TomTom Map Share corrections are not sent to your navigation device using a wireless connection. You should regularly connect your device to your computer and use TomTom HOME to check for new updates.

---

## Correction preferences

The correction preferences set the way TomTom Map Share works on your device.

You can set the following preferences:

- Use the trust level slider to choose the types corrections from the Map Share community you want to use on your maps.
- Decide if you want to share your corrections with others.
- Show or hide the report button in the Driving View.

To set your preferences, tap **Map corrections** in the Main Menu.

---

**Tip:** If you later decide you want to remove corrections from the map, clear the checkbox next to the types of correction you want to remove. If you clear all the checkboxes, your map returns to the original state before the first correction.

---

## Trust slider

Use the Trust level slider to set the type of map corrections you want added to your map. To do this, tap **Correction preferences** in the Map corrections menu.



There are four levels of trust that you can choose. The level changes when you move the slider:

- **TomTom** - only accept changes made by TomTom.
- **Trusted sources** - accept changes made by TomTom and by trusted users who have been verified by TomTom.
- **Many users** - accept changes made by TomTom, by trusted users who have been verified by TomTom and changes made by a high number of Map Share community members.
- **Some users** - accept changes made by TomTom, by trusted users who have been verified by TomTom and all changes that have been made by Map Share community members.

## Types of map correction

There are several types of correction that you can make to a map.

To make a correction to your map, tap **Map corrections** in the Main Menu then tap **Correct a map error**. The following types of corrections are shown.



Tap this button to block or unblock a street. You can block or unblock the street in one or both directions.

For example, to correct a street near to your current location, do the following:

1. Tap **(Un)block street**.
2. Tap **Near you** to select a street near your current location. You can select a street by name, a street near your Home location or a street on the map.
3. Select the street or section of a street you want to correct by tapping it on the map.

The street you select is highlighted and the cursor shows the name of the street.

4. Tap **Done**.

Your device shows the street and whether the traffic is blocked or allowed in each direction.



5. Tap one of the direction buttons to block or unblock the flow of traffic in that direction.
6. Tap **Done**.

The next time you connect your device to TomTom HOME, your corrections are shared with the TomTom Map Share community.



Reverse traffic direction

Tap this button to correct the traffic direction of a one-way street, where the direction of traffic is different to the direction shown on your map.

---

***Note:** Reverse traffic direction only works for one-way streets. If you select a two-way street you will be given the chance to block/unblock the street rather than changing the direction.*

---



Edit street name

Tap this button to change the name of a street on your map.

For example, to rename a street near to your current location:

1. Tap **Edit street name**.
2. Tap **Near you**.
3. Select the street or section of a street you want to correct by tapping it on the map.

The street you select is highlighted and the cursor shows the name of the street.

4. Tap **Done**.
5. Type the correct street name.
6. Tap **Done**.



Change turn restrictions

Tap this button to change and report incorrect road turn directions.



Change road speed

Tap this button to change and report road speed limit.



Add missing POI

Tap this button to add a new Point of Interest (POI).

For example to add a new restaurant near to your current location:

1. Tap **Add missing POI**.
2. Tap **Restaurant** in the list of POI categories.
3. Tap **Near you**.
4. Select the location of the missing restaurant.

You can select the location by entering the address or by selecting the location on the map. Select **Near you** or **Near home** to open the map at your current location or at your Home location.

5. Tap **Done**.
6. Type the name of the restaurant then tap **OK**.
7. If you know the telephone number of the restaurant you can type it, then tap **OK**.

If you don't know the number, just tap **OK** without typing a number.

---



### **Edit POI**

Tap this button to edit an existing POI.

You can use this button to make the following changes to a POI:

- Delete the POI.
- Rename the POI.
- Change the telephone number of the POI.
- Change the category that a POI belongs to.
- Move the POI on the map.



### **Report other error**

Tap this button to report other types of corrections.

These corrections are not immediately applied to your map. Your TomTom XL sends a special report to TomTom Map Share.

You can report missing streets, errors in motorway entrances and exits and missing roundabouts. If the correction you want to report is not covered by any of these report types, enter a general description then tap Other.

---

## 11. Sounds and voices

---

Your TomTom XL plays the following kinds of sound:

- Spoken instructions
- Warnings

### Changing the volume level

You can change the volume in three ways:

- Tap the bottom left hand area of the Driving View. The last spoken instruction is repeated and the volume level is shown.

Move the volume slider to adjust the volume.

- In the Main Menu, tap **Change preferences**, then tap **Volume preferences**.

Tap **Test** to check your changes.

### Selecting a voice



Voice preferences

To change the voice being used by your TomTom XL, tap **Voice preferences** in the Preferences menu, then tap **Change voice**. Select a voice from the list.

## 12. Preferences

---

You can change the way your TomTom XL looks and behaves.

Tap **Change preferences** in the Main Menu.

### Hidden buttons and features

When you first start using your TomTom XL, all the buttons are shown in the menu.

The buttons for the more advanced features can be hidden. This is a useful option because you are unlikely to use certain features very often.



**Show fewer menu options**

Tap this button in the Preferences menu, to reduce the number of buttons that are shown.

You might want to do this so that only frequently used buttons are shown.

When you need to use the buttons that are hidden, you can press **Show ALL menu options** in the Preferences menu to show all buttons.



**Show ALL menu options**

Tap this button in the Preferences menu, to show all the buttons available on your TomTom XL.

### Use night colours / Use day colours



**Use Night colours**

Tap this button to reduce the brightness of the screen and show darker colours on the map.

#### **When should I use this?**

When it's dark, it is easier to see the screen if the display on your XL is not brightly lit.



**Use day colours**

To change back to a brighter screen showing brighter colours on the map, tap **Use day colours**.

## Show POI on map



Show POI on map

Tap this button to set which categories for the Points of Interest (POIs) should be shown on the map:

1. Tap **Show POIs on map** in the Preferences menu.
2. Select the POI categories to display on the map.

Tap **Find** to search for a POI category.

3. Tap **Done**.

The POIs you have selected are shown as symbols on the map.

## Safety preferences



Safety preferences

Tap this button to set the following safety preferences:

- **Hide most menu options while driving**
- **Suggest driving breaks**
- **Show safety reminders**
- **Warn when near places of worship or schools**
- **Warn when driving faster than allowed**
- **Warn when driving faster than a set speed**
- **Warn not to leave the device in the car**

If you select one or more of the warnings, you will also be asked to select a sound to be played whenever a warning is displayed.

Select whether or not your TomTom XL should warn you about which side of the road you should be driving on.

Decide if you want the map display to be turned off in special circumstances and press **Done**.

### What happens when I use the Turn off map display option?

When you turn off the map display, instead of seeing your position on a map in the Driving View, you will only see information about the next instruction.

Tap the button and select an option for when the map should be turned off. These are the options:

- **Always** - The map will not be shown and you will only see information about the next instruction and arrows showing direction.
- **Above a certain speed** - you set the speed at which point the map will be turned off. This option is useful for situations when the map might be distracting, such as when you are driving fast.
- **Never** - the map is never turned off.

## Guided tours

---

This button may only be available if all menu options are shown. To show all menu options, tap **Show ALL menu options** in the Preferences menu.

---



Guided tours

Tap this button to show one of the Guided tours on how to use your TomTom XL.

## Turn off sound / Turn on sound



Turn off sound

Tap this button to turn off sound. If you turn off the sound, warnings for upcoming POIs are also turned off.

The button changes to **Turn on sound**.

---

### Tips

To change the volume, tap **Volume preferences** in the Preferences menu.

To change the volume quickly while you are driving, tap the bottom left-hand section of the Driving View and move the slider.

To change the voice being used by your XL, tap **Change voice** in the Voice preferences menu.

---

## Volume preferences



Volume preferences

Tap this button to change the volume.

## Manage Favourites



Manage Favourites

Tap this button to rename or delete Favourites.

To find a Favourite quickly, tap **Find**, then start to type the name of the Favourite. As soon as the Favourite is shown in the list, you can select it.

## Change Home location



Change Home location

Tap this button to set or change your Home location.

**Do I need to use my actual home address for the Home location?**



No. Your Home location can be a place you go often, for example, your office. It can be your actual home address, but it can be any address you like.

### Why should I set a Home location?

Having a Home location means that you have a quick and easy way to navigate there, by tapping the Home button in the **Navigate to...** menu

## Change voice



Change voice

Tap this button to change the voice which gives you instructions.

## Manage POIs

---

This button may only be available if all menu options are shown. To show all menu options, tap **Show ALL menu options** in the Preferences menu.

---



Manage POIs

Tap this button to do the following:

- Set alerts for when you are near POIs.

For example, your XL can tell you when there is a petrol station nearby.

- Create your own POI categories and add POIs to them.

For example, you could create a category of POIs called "Friends", and add all your friend's addresses as POIs in the category. You can even add your friends' phone numbers with their address so you can call them from your XL.

The following buttons are available:

- **Add POI** - tap this button to add a location to a POI category you have created.
- **Warn when near POI** - tap this button to be warned when you approach a POI. You can select the types of POI for which you wish to be warned.
- **Delete POI** - tap this button to delete a POI you created.
- **Edit POI** - tap this button to edit the details of a POI you created.
- **Add POI category** - tap this button to create a new POI category.
- **Delete POI category** - tap this button to delete a POI category you created.

## Change car symbol

---

This button may only be available if all menu options are shown. To show all menu options, tap **Show ALL menu options** in the Preferences menu.

---



Change car symbol

Tap this button to select a car symbol that will be used to show your current position in the Driving view.

Additional car symbols can be downloaded using TomTom HOME.

## Change 2D/3D display / Turn on 2D display



Turn on 2D display

Tap **Turn on 2D display** to change the perspective for viewing the map.

For example, the 2D view shows a two dimensional view of the map as though viewed from above.



Change 2D/3D display

To switch the view to a three dimensional perspective, tap **Change 2D/3D display** and select a view from the list.

### When should I use this?

In some situations, it is easier to see the map from above. Perhaps if the road network is complicated or for times when you are walking while using your XL to navigate.

## Show/Hide lane images

---

This button may only be available if all menu options are shown. To show all menu options, tap **Show ALL menu options** in the Preferences menu.

---



Show lane images

Tap this button to show or hide the arrows that warn you which lane you need to be in to navigate an approaching road exit or junction.

## Manage maps

---

This button may only be available if all menu options are shown. To show all menu options, tap **Show ALL menu options** in the Preferences menu.

---



Manage maps

Tap this button to do the following:

- **Download a map** - tap this button to download a map you have bought using TomTom HOME. It may not be possible to download maps on all devices.
- **Switch map** - tap this button to change the map you are using.
- **Download free map corrections** - tap this button to download map corrections provided as part of the Map Share service.

Use TomTom HOME to make backups, download, add and delete maps from your navigation device.

## Change map colours

---

This button may only be available if all menu options are shown. To show all menu options, tap **Show ALL menu options** in the Preferences menu.

---



Change map colours

Tap this button to select the colour schemes for day and night map colours.

You can also download more colour schemes from TomTom Services.

## Change language



Change language

Tap this button to change the language used for all the buttons and messages you see on your XL.

You can choose from a wide range of languages. When you change the language, you are also given the opportunity to change the voice.

## Status bar preferences

---

This button may only be available if all menu options are shown. To show all menu options, tap **Show ALL menu options** in the Preferences menu.

---



Status bar preferences

Tap this button to select the information shown on the status bar:

- **How should the status bar be displayed?**

**Horizontal** - If you choose this option, the status bar will be shown at the bottom of the Driving view.

**Vertical** - If you choose this option, the status bar will be shown at the right-hand side of the Driving view.

- **Remaining time** - the estimated time left until you reach your destination.
- **Remaining distance** - the distance left until you reach your destination.
- **Current time**
- **Arrival time** - your estimated arrival time.
- **Speed**
- **Direction**
- **Show lane guidance**
- **Show current street name**
- **Show leeway to arrival time** - your XL shows how late or early you will be compared with the preferred arrival time that is set during the planning of a route.
- **Show max speed next to speed** - only available when speed (above) is also selected.

---

*Note: If the speed limit for the road you are on is available, it is shown next to your speed.*

*If you drive faster than the speed limit, your speed is shown in red.*

---

## Quick menu preferences

---

This button may only be available if all menu options are shown. To show all menu options, tap **Show ALL menu options** in the Preferences menu.

---



Quick menu preferences

Tap this button to choose up to six buttons to be used in the Quick menu.

The Quick menu button enables easy access for your most commonly used buttons.

The buttons you assign for use with the Quick menu, are shown in the Driving View.

## Street name preferences

---

This button may only be available if all menu options are shown. To show all menu options, tap **Show ALL menu options** in the Preferences menu.

---



Tap this button to set the information that is shown on the map in the Driving View. The following options are available:

- **Show house number before street name**
- **Show street names** - if you are using a computer voice for spoken instructions and have selected that street names should be read aloud, you do not need to select this option, since the street names will be read aloud even though this option is not selected.
- **Show next street name**
- **Show current street name on map**
- **Show next motorway / signpost** - if available, the road sign to follow or the name of the next major road on your route is shown at the top of the screen in the Driving View.

## Planning preferences

---

This button may only be available if all menu options are shown. To show all menu options, tap **Show ALL menu options** in the Preferences menu.

---



Tap this button to set the kind of route planned when you select a destination.

The following options are available:

- **Ask me every time I plan**
- **Always plan fastest routes**
- **Always plan shortest routes**
- **Always avoid motorways**
- **Always plan walking routes**
- **Always plan bicycle routes**
- **Always plan for limited speed**

Tap the **IQ Routes** button to enable or disable IQ Routes.

IQ Routes is used to plan the best possible route taking into account the real average speeds measured on the roads.

Then set how your XL should handle the following when planning a route:

- Toll roads on the route
- Ferry crossings on the route
- HOV lanes on the route
- Unpaved roads

You can then set if the route summary screen closes automatically after you have planned a route. If you select **No**, you have to tap **Done** to close the route summary screen.

### Replanning preferences

Select whether or not you want your TomTom XL to replan your route when a faster route is found while you drive. This might occur due to changes in the traffic situation.

## Brightness preferences

---

This button may only be available if all menu options are shown. To show all menu options, tap **Show ALL menu options** in the Preferences menu.

---



**Brightness preferences**

Tap this button to set the brightness of the screen.

Move the sliders to set the brightness separately for day map colours and for night map colours.

You can also set this option:

- **Switch to night view when dark** - your XL uses night colours for the Driving View based on the time of day.

You can set the map colour scheme by tapping **Change map colours**.

## Set owner

---

This button may only be available if all menu options are shown. To show all menu options, tap **Show ALL menu options** in the Preferences menu.

---



**Set owner**

Tap this button to enter your name and address as the owner of your XL and to change or delete a 4-digit password for your XL.

---

**Note:** You can only change or delete a 4-digit password on your TomTom XL.

---

You can create a 4-digit password for your XL using TomTom HOME:

1. Connect your XL to your computer and turn on your XL and your computer.  
TomTom HOME starts automatically.
2. Click on **Operate my XL** in TomTom HOME.  
Your XL appears and can be controlled using TomTom HOME.
3. From the Main Menu, click **Change preferences**.
4. Click **Set Owner**. You can now set a 4-digit password for your XL.

You can only create a 4-digit password using TomTom HOME.

## Set units

---

This button may only be available if all menu options are shown. To show all menu options, tap **Show ALL menu options** in the Preferences menu.

---



Set units

Tap this button to set the type of units that will be shown for the following:

- Distance
- Time
- Latitude and longitude
- Temperature
- Air pressure

## Operate left-handed / Operate right handed

---

This button may only be available if all menu options are shown. To show all menu options, tap **Show ALL menu options** in the Preferences menu.

---



Operate left-handed

Tap this button to move important buttons, for example, the **Done** and **Cancel** buttons as well as the zoom bar, to the left hand side of the screen. This makes it easier to tap the buttons with your left hand without blocking the screen.

To move the buttons back to the right hand side of the screen, tap **Operate right-handed**.

## Keyboard preferences



Keyboard preferences

You use the keyboard to enter your destination or to find an item in a list, such as a POI.

Tap this button to select the size of the keys on the keyboard and the keyboard layout. You can select from two sizes:

- **Large keyboard**
- **Small keyboard**

Three keyboard layouts are available:

- **ABCD keyboard**
- **QWERTY keyboard**
- **AZERTY keyboard**

## Set clock



Set clock

Tap this button to select the type of clock that is shown and set the time.

The easiest way to set the time is by tapping the **Sync** button. Your XL will then take the time from GPS information.

---

***Note:** After using **Sync** to set the time, you may have to adjust the hours depending on your time zone. Your XL works out your time zone and always keeps the time correct using GPS information.*

*You can only use **Sync** if you have GPS reception, so you cannot set the clock in this way when you are indoors.*

---

## Flight mode



Flight Mode

Tap this button to enable or disable all wireless connections on your navigation device, such as Bluetooth and GSM mobile communications.

This is important when entering areas, such as a hospital, where you must turn off devices that transmit radio signals.

## My TomTom account

---

This button may only be available if all menu options are shown. To show all menu options, tap **Show ALL menu options** in the Preferences menu.

---



MyTomTom  
account

Tap this button to log in to your TomTom account.

If you have more than one TomTom account or if several people are sharing the same TomTom XL, you can switch to another TomTom account.

## Reset factory settings

---

This button may only be available if all menu options are shown. To show all menu options, tap **Show ALL menu options** in the Preferences menu.

---



Reset factory  
settings

Tap this button to restore the factory settings to your TomTom XL.

All your settings, including Favourites, your Home location, warnings for POIs and any itineraries you have created are deleted.



## 13. Points of Interest

---

Points of Interest or POIs are useful places on the map. Here are some examples:

- Restaurants
- Hotels
- Museums
- Parking garages
- Petrol stations

---

*Note: You can report missing POIs or edit existing POIs using Map Share and share your corrections with the Map Share community.*

---

### Creating POIs

---

*Note: You can also download sets of POIs and share the POI sets you create using TomTom HOME.*

---

1. Tap the screen to bring up the Main Menu.
2. Tap **Change preferences**.
3. Tap **Manage POIs**.

---

This button may only be available if all menu options are shown. To show all menu options, tap **Show ALL menu options** in the Preferences menu.

---

4. Before you can add a POI, you have to create at least one POI category. Every POI is assigned to a POI category. You can only add POIs to POI categories you have created yourself.



Add POI category

Tap **Add POI category**.

5. Enter a name for your POI category, for example, 'Friends' or 'Favourite restaurants'. Then select a marker for your POI category.
6. Tap **Add POI**.



Add POI

Tap this button to add a POI.

7. You are asked to name the POI.
8. Select the POI category in which you want to add the POI.
9. Select the location of your POI from the list below.



Local search

Tap this button to use TomTom Local Search with Google search to help you find shops and businesses in and around your current location.

You can choose to search for shops and businesses near you, near your destination, near any other destination or in a city.

For example, if you are looking for a swimming pool near your current location, enter 'swimming pool' and choose the best search result.



Home

You can set your Home location as a POI.

If you want to change your Home location, you can create a POI of the Home location before you change it.



Favourite

You can create a POI from a Favourite.

You can only create a limited number of Favourites. If you want to create more Favourites you have to delete some Favourites first. Before you delete a Favourite, make it into a POI so that you don't lose the address.



Address

You can specify an address to be a POI. When you enter an address, you can choose from four options.

- **City centre**
- **Street and house number**
- **Postcode**
- **Crossing or intersection**



Recent destination

Select a POI location from a list of places you have recently used as destinations.



Point of Interest

You can add a Point of Interest (POI) as a POI. For example, if you are creating a category of POIs for your favourite restaurants, use this option instead of entering the addresses of the restaurants.



My location

Tap this button to add your current position as a POI.

For example, if you stop somewhere you like, while you are there you can tap this button to create the POI.



Point on map

Tap this button to create a POI using the map browser.

Select the location of the POI using the cursor, then tap **Done**.

---



Latitude  
Longitude

Tap this button to create a POI by entering latitude and longitude values.

---



Position of  
last stop

Tap this button to select your last recorded position as your destination.

This may be useful if your XL is unable to maintain a strong GPS signal, for example, when you drive through a long tunnel.

---

---

***Note:** You can report missing POIs or edit existing POIs using Map Share and share your corrections with the Map Share community.*

---

## Navigating to a POI

You can use a POI as your destination. For example, if you are travelling to an unfamiliar city, you could choose a POI to help find a parking garage.

1. Tap the screen to bring up the Main Menu.
2. Tap **Navigate to...** in the Main Menu.
3. Tap **Point of Interest**.
4. Tap **POI in city**.
5. Narrow your choice of POIs by selecting the area where the POI is located.

You can select one of these options:

- **POI near you** - to choose from a list of POIs near to your current location.
- **POI in city** - to find a POI in a particular town or city.
- **POI near Home** - to choose from a list of POIs near to your Home location.

You can select from a list of POIs which are along your route or close to your destination. Choose from one of these options:

- **POI along route**
- **POI near destination**

---

***Note:** The last POI you viewed is also shown so that you can plan a route there more quickly.*

---

6. Type the name of the town you want to visit and select the town when it appears in the list.
7. Select the category of POI:

Tap **Any POI category** to search for a POI by category name.

Tap the category of POI, if it is shown.

Tap the arrow to choose from the complete list of categories. Select the category from the list or start to type the name of the category and select it when it appears in the list.

8. Tap **Parking garage**.

9. From the list of POIs shown, select the POI you want to navigate to.

The table below explains the distances listed next to each POI.

POI near you	Distance from your current location
POI in city	Distance from the city centre
POI near Home	Distance from your Home location
POI along route	Distance from your current location
POI near destination	Distance from your destination

If you know the name of the POI, tap **Find** and type the name. Select it from the list when it is shown.

The next screen shows more detailed information including the location of the POI on the map and the phone number of the POI, if available.

Tap **Select** to confirm you want to plan a route to this POI.

Once you have selected a POI, the route to the POI is calculated by your TomTom XL.

---

***Note:** You can also use Google Local Search to find shops and businesses wherever you are. For more information, see the chapter on LIVE Services.*

---

## Showing POIs on the map

1. Tap **Show POIs on map** in the Preferences menu.



**Show POI on map**

2. Select the POI categories to display on the map.

Tap **Find** to search for a POI by name.

3. Tap **Done**.

The POIs you have selected are shown as symbols on the map.

## How can I set warnings for POIs?

1. Tap the screen to bring up the main menu.

2. Tap **Change preferences**.

3. Tap **Manage POIs**.

---

**Note:** The *Manage POIs* button is only available when all menu buttons are shown. To show all menu buttons, tap **Show ALL menu options** in the Preferences menu.

---

4. Tap **Warn when near POI**.



Warn when near POI

Tap this button to receive a warning when you travel near to the location of a POI.

5. Select the category of POI you want to be warned about.

Select the category from the list or start to type the name of the category and select it when it is shown in the list.

6. Set how close the POI should be when you receive a warning.

7. Choose the warning sound for the category of POI you selected.

## Managing POIs



Manage POIs

Tap **Manage POIs** from the Preferences menu.

---

**Note:** The *Manage POIs* button is only available when all menu buttons are shown. To show all menu buttons, tap **Show ALL menu options** in the Preferences menu.

---

You can, for example, do the following:

- Create your own POI categories and add POIs to them.
- Set warnings when you get close to POIs.

### Why would I want to create my own POIs?

A POI acts like a shortcut - once you have saved a location as a POI you never have to type the address of that POI again. But when you create a POI you can save more than just the location.

- Phone number - when you create a POI, you can save a phone number with it.
- Categories - when you create a POI you have to put it in a category.

For example, you could create a category of POIs called 'Favourite restaurants'. With each POI, save their phone number so that you can call them to reserve a table.

---

**Note:** You can report missing POIs or edit existing POIs using *Map Share* and share your corrections with the *Map Share* community.

---

## 14. Itinerary Planning

---

### What is an Itinerary?

An Itinerary is a plan for a journey including more locations than your final destination.

An Itinerary can include the following items:

- Destination - a location on your journey where you want to stop.
- Waypoint - a location on your journey where you want to travel through without stopping.



Destinations are shown using this symbol.



Waypoints are shown using this symbol.

### When would I use an Itinerary?

You could use an Itinerary for trips such as:

- A driving holiday through a country with lots of stops.
- A two day car journey with an overnight stop.
- A short drive which passes by Points of Interest.

In all these examples you could tap **Navigate to...** for each place. However, if you use an Itinerary, you can save time by planning everything in advance.

### Creating an Itinerary

1. Tap the screen to bring up the Main Menu.
2. Tap **Itinerary planning**.



## Itinerary planning

The Itinerary planning screen opens. At first, there are no items on the Itinerary.

---

**Note:** This button may only be available if all menu options are shown. To show all menu options, tap **Show ALL menu options** in the Preferences menu.

---

3. Tap **Add** and select a location.

---

**Tip:** You can add items to your Itinerary in any order and rearrange the order later.

---

## Following an Itinerary

When you use an Itinerary to navigate, the route will be calculated to the first destination on the Itinerary. Your TomTom XL calculates the remaining distance and time to the first destination and not for the whole Itinerary.

As soon as you start to use an Itinerary, the route is calculated from your current position. You do not need to set a departure point.

When you have passed a waypoint or reached a destination, it is marked as visited.

Waypoints are shown on the map. Your XL will not warn you, when you are approaching a waypoint or when you arrive at a waypoint.

## Organising an Itinerary

Tap an item on your Itinerary to open a page of buttons for editing the item. The buttons shown below are available.



Mark as  
waypoint

You can change a destination into a waypoint using this button.

Remember that waypoints are points on your journey to your destination that you want to pass and destinations are places where you want to stop.

This button is only shown if the item you tapped is a destination.



Mark as  
destination

You can change a waypoint into a destination using this button.

Remember that destinations are places where you want to stop, and waypoints are points on your journey to your destination that you want to pass.

This button is only shown if the item you tapped is a waypoint.



Mark 'visited'

Tap this button to miss out part of your Itinerary. Your XL will ignore this item and all the items before it in the Itinerary.

It will navigate you to the next item in the Itinerary.

This button is only shown if you are still due to visit this item.

---



**Mark 'to visit'**

Tap this button to repeat part of your Itinerary. Your XL will navigate you to this item followed by the rest of the items in the Itinerary.

This button is only shown if you have already visited this item.

---



**Move item up**

Tap this button to move the item up the Itinerary.

This button is unavailable if the item is at the top of the Itinerary.

---



**Move item  
down**

Tap this button to move the item down the Itinerary.

This button is unavailable if the item is at the bottom of the Itinerary.

---



**Show on map**

Tap this button to see the location of the item on the map.

---



**Delete item**

Tap this button to delete the item from the Itinerary.

---

## Start using an Itinerary

Tap **Options**, then tap **Start navigation**.

To save an Itinerary, tap **Save Itinerary**.

To load a saved Itinerary, tap **Load Itinerary**.

To create a new Itinerary, tap **New Itinerary** and to delete one, tap **Delete Itinerary**.



## 15. Help me

---

**Help me** provides an easy way to navigate to emergency services centres and other specialist services and contact them by phone.

For example, if you are involved in a car accident, you could use **Help me** to call the nearest hospital and tell them your exact location.

---

**Tip:** If you do not see the **Help me** button in the Main Menu, tap **Show ALL menu options** in the Preferences menu.

---

### Options

---

*Note: In some countries, information may not be available for all services.*

---



#### Phone for help

Tap this button to find the contact details and location of a service centre.



#### Drive to help

Tap this button to navigate your way by car to a service centre.



#### Walk to help

Tap this button to navigate your way on foot to a service centre.



#### Where am I?

Tap this button to see your current location on the map. You can then tap **Phone for help** and select the type of service you want to contact and tell them your exact location.



#### First Aid guide

Tap this button to read the British Red Cross First Aid guide.



#### Other guides

Tap this button to read a selection of useful guides.

---

## 16. Favourites

---

### What are Favourites?

Favourites are places that you often visit. You can create Favourites so that you don't have to enter the address every time you want to navigate there.

They don't have to be places you especially like, just useful addresses.

### How can I create a Favourite?

From the Main Menu, tap **Add Favourite**.

You can then select the location of the Favourite from the list below.

Give your Favourite a name that is easy to remember. Your XL will always suggest a name, usually the address of the Favourite. To enter the name, just start typing. You don't have to delete the suggested name.



Local search

Tap this button to use TomTom Local search with Google search to help you find shops and businesses and save the location as a Favourite.

You can choose to search for shops and businesses near you, near your destination, near any other destination or in a city.

For example, if you are looking for a swimming pool near your current location, enter 'swimming pool' and choose the best search result.



Home

You can set your Home location as a Favourite.



Favourite

You cannot create a Favourite from another Favourite. This option will always be unavailable in this menu.

To rename a Favourite, tap **Manage Favourites** in the Preferences menu.



Address

You can specify an address to be a Favourite. When you enter an address, you can choose from four options.

- **City centre**
  - **Street and house number**
  - **Postcode**
  - **Crossing or intersection**
-



**Recent destination**

Select a Favourite location from a list of places you have recently used as destinations.



**Point of Interest**

You can add a Point of Interest (POI) as a Favourite.

**Does it make sense to do this?**

If you visit a POI you particularly like, for example a restaurant, you can add it as a Favourite.

To add a POI as a Favourite, tap this button, then do the following:

1. Narrow your choice of POIs by selecting the area where the POI is.

You can select one of these options:

- **POI near you** - to search from a list of POIs near your current position.
- **POI in city** - to choose a POI in a particular town or city. You have to specify a town or city.
- **POI near Home** - to search from a list of POIs near your Home location.

If you are currently navigating to a destination, you can also select from a list of POIs which are on your route or near your destination. Choose one of these options:

- **POI along route**
- **POI near destination**

2. Select the category of POI.

Tap the category of POI if it is shown or tap the arrow to choose from the complete list.

Tap **Any POI category** to search for a POI by name.



**My location**

Tap this button to add your current position as a Favourite.

For example, if you stop somewhere interesting, while you are there you can tap this button to create the Favourite.



**Point on map**

Tap this button to create a Favourite using the map browser.

Select the location of the Favourite using the cursor, then tap **Done**.



**Latitude Longitude**

Tap this button to create a Favourite by entering latitude and longitude values.



**Position of last stop**

Tap this button to select your last recorded position as your destination.

---

## How can I use a Favourite?

You will normally use a Favourite as a way of navigating to a place without having to enter the address. To navigate to a Favourite, do the following:

1. Tap the screen to bring up the Main Menu.
2. Tap **Navigate to...**
3. Tap **Favourite**.
4. Select a Favourite from the list.

Your XL calculates the route for you.

5. When the route is calculated, tap **Done**.

Your XL will immediately start guiding you to your destination with spoken instructions and visual instructions on the screen.

## How can I change the name of a Favourite?

1. Tap the screen to bring up the Main Menu.
2. Tap **Change preferences** to open the Preferences menu.
3. Tap **Manage Favourites**.
4. Tap the Favourite you want to rename.
5. Tap **Rename**.

## How can I delete a Favourite?

1. Tap the screen to bring up the Main Menu.
2. Tap **Change preferences** to open the Preferences menu.
3. Tap **Manage Favourites**.
4. Tap the Favourite you want to delete.
5. Tap **Delete**.

## 17. LIVE Services

---

### Regional availability

*Note: As well as using LIVE services in your own country, you may also be able to use LIVE services when travelling abroad. Not all LIVE services are available in all countries. For more information on available services, go to [www.tomtom.com/services](http://www.tomtom.com/services).*

### Safety Notice

Your TomTom navigation device contains a GSM/GPRS module which can interfere with electrical devices such as cardiac pacemakers, hearing aids and aviation equipment.

Interference with these devices may endanger the health or life of others.

Do not use near unprotected electrical units nor in areas where the use of mobile telephones is prohibited, such as hospitals and airplanes.

### LIVE Services subscriptions

#### Checking your LIVE Services subscription

You can check the status of your subscriptions at any time, by doing the following on your XL.

In the Main Menu, tap **TomTom Services** and then tap **My Services**.

Your XL also warns you when your LIVE Services subscription is approaching the renewal date.

For more information about LIVE Services subscription and payment terms, go to [tomtom.com/services](http://tomtom.com/services).

#### Renewing your LIVE Services subscription using your XL

1. In the Main Menu, tap **TomTom Services** and then tap **My Services**.

The current status of your LIVE Services is shown.

2. Tap on the service you want to renew.

Your XL confirms that you want to renew your subscription.

3. Tap **Yes**.

The renewal request is sent to TomTom. You should complete payment online, on or before the date shown on your XL.

#### Renewing your LIVE Services subscription using TomTom HOME

1. Connect your XL to your computer.

TomTom HOME starts and connects to your XL.

2. Open the LIVE Services section.
3. Check the status of your subscription and click on the service you want to renew.

You are asked to provide your payment details.

4. Enter your payment details and complete the transaction.

Your subscription is renewed.

## TomTom HD Traffic



HD Traffic is a unique TomTom LIVE Service for receiving up-to-date traffic information. For more information about services and subscriptions, go to [tomtom.com/services](http://tomtom.com/services).

In combination with IQ Routes, HD Traffic helps you plan the best possible route to your destination taking into account the latest traffic information.

A route is calculated taking into account the current local traffic conditions. Your TomTom XL automatically receives regular traffic information updates. If traffic incidents are found on your route, you are asked if you want to replan the current route to try and avoid the traffic incidents.

## Fuel Prices



The Fuel Prices service sends up-to-date information about fuel prices directly to your device or via TomTom HOME when your XL is connected to your computer.

### Search for the best fuel prices

To search for the cheapest fuel prices, do the following. In this example, you will plan a route to the cheapest petrol station nearby.

1. Tap the screen to bring up the Main Menu, then tap **TomTom Services**.
2. Tap **Fuel Prices**.
3. Select the type of fuel used in your vehicle.
4. Tap **Cheapest nearby**, then tap the name at the top of the list.

The location is shown on the map.

5. Tap **Select**.

You are asked if you want to navigate to the petrol station.

6. Tap **Yes**.

You may be asked if you need to arrive at a particular time, if this option is enabled.

The route is planned and a summary of the route is shown on the map.

## TomTom local search with Google



Using local search, you can search the Google listings to find shops and businesses near you, or any another location, and navigate there.

## Using local search

To find a destination using local search and plan a route to that location, follow the steps below. In this example, you will search for a supermarket near to your current location.

1. Tap the screen to bring up the Main Menu, then tap **Navigate to**.
2. Tap the **Google** button.
3. Tap **Search near you**.
4. Type 'supermarket' then tap **OK**.

The locations that match your search are shown in a list.

5. Tap one of the locations in the list.

The location is shown on the map.

Tap **Details** to see more information about this location.

6. Tap **Navigate there** to plan a route to the location.

Your TomTom XL plans a route to the location you selected.

## TomTom Safety Alerts



The TomTom Safety Alerts service warns you about a variety of locations including:

- Safety camera locations.
- Accident blackspot locations.
- Mobile safety camera locations.
- Average speed camera locations.
- Toll road camera locations.
- Traffic light camera locations.

---

**Important:** Regularly connect your navigation device to TomTom HOME to update the list of locations for all Safety Alerts. If a wireless connection is available for your device, mobile safety camera locations can be sent to your device using a wireless connection.

---

When a safety camera location is shown on the map, a warning sound is played to warn you that you are approaching an area where a safety camera is located.

If you discover a location that has a safety camera but you receive no warning, you can report the new location to TomTom using your XL.

## Other services



The following services are also available on your TomTom XL:

### TomTom Weather

TomTom Weather gives you five day weather reports for any location on your map.



### QuickGPSfix™

QuickGPSfix contains information about GPS satellite positions which helps your TomTom XL find your position faster.



## My Services

To check your subscription, tap **TomTom Services** in the Main Menu and then tap **My Services**.



**Note:** When LIVE Services are unavailable, this image is shown in the Driving View.

Your TomTom XL informs you when your LIVE Services subscription is due for renewal. You can use your XL to inform TomTom that you wish to renew your current subscription.

For more information about LIVE Services subscription and payment terms, go to [tomtom.com/services](http://tomtom.com/services).



## 18. TomTom HD Traffic

---



HD Traffic is a unique TomTom LIVE Service for receiving up-to-date traffic information. For more information about services and subscriptions, go to [tomtom.com/services](http://tomtom.com/services).

In combination with IQ Routes, HD Traffic helps you plan the best possible route to your destination taking into account the latest traffic information.

A route is calculated taking into account the current local traffic conditions. Your TomTom XL automatically receives regular traffic information updates. If traffic incidents are found on your route, you are asked if you want to replan the current route to try and avoid the traffic incidents.

### Safety Notice


Your TomTom navigation device contains a GSM/GPRS module which can interfere with electrical devices such as cardiac pacemakers, hearing aids and aviation equipment.

Interference with these devices may endanger the health or life of others.

Do not use near unprotected electrical units nor in areas where the use of mobile telephones is prohibited, such as hospitals and airplanes.

### Using TomTom HD Traffic

The Traffic bar is shown on the right side of the Driving View. It warns you about traffic incidents on your planned route.



The top of the Traffic bar represents your destination and shows the total delay time for any incidents on your route.

The central section of the Traffic bar shows individual traffic incidents in the order they occur on your route.

The bottom of the Traffic bar represents your current position and shows the distance to the next incident.

To make the Traffic sidebar more readable some incidents may not be shown. These incidents will always be of minor importance and only cause short delays.

---

**Note:** The colour of the sidebar changes colour depending on how old the traffic information is on your device.

---

To find the quickest route to your destination taking into account the latest traffic information, do the following:

1. Tap the sidebar.

---

**Tip:** If you have trouble tapping the sidebar and the Main Menu is being displayed instead of the traffic menu, try tapping your finger half on the sidebar and half off the screen.

---

2. Tap **Minimise traffic delays**.

Your device looks for the quickest route to your destination.

It is possible that the new route may also include traffic delays, or may even be the same route as before. You can re-plan the route to avoid all delays, but this new route will take longer than the quickest route already shown.

3. Tap **Done**.

---

**Tip:** You can let your TomTom device automatically minimise traffic delays for you.

---

## Minimise delays

You can set HD Traffic to minimise traffic delays on your route each time the latest traffic information updates are received.

1. Tap **TomTom Traffic** in the Main Menu.
2. Tap **Change Traffic preferences**.
3. Select **Automatically minimise delays after every traffic update**.
4. Tap **Done**.

## Changing HD Traffic preferences

Use the **Change Traffic preferences** button to choose how HD Traffic works on your device.



**Change Traffic preferences**

1. Tap **TomTom Traffic** in the Main Menu.
2. Tap **Change Traffic preferences**.
3. To hear a beep sound when a new traffic incident occurs on your route, select **Beep when traffic situation on route changes** and then tap **Done**.
4. If a faster route is found while you are driving, Traffic can replan your journey to use the faster route. Select one of the following options and then tap **Done**.

**Always switch to that route**

**Ask me if I want to change**

**Never change my route**

5. Tap **Done**.

## Making commuting to work easier

The **Home to work** or **Work to home** buttons in the Traffic menu lets you check your route to and from work with one tap of a button. When you use either of these buttons, your device checks the route for possible delays and if it finds any, provides you with the possibility to avoid them.

The first time you use **Home to work**, you must set your traffic home and work locations, do the following:



1. Tap **TomTom Traffic** in the Main Menu.
2. Tap **Show home-work traffic**.
3. Tap **Change home-work**
4. Set your home location
5. Set your work location.

You can now use the **Home to work** and **Work to home** buttons of the Show home-work traffic menu.

---

***Note:** The home location you set here is not the same as the home location you can set in the **Preferences Menu**. In addition, the locations you use here do not have to be your actual home and work locations. If there is another route that you often travel, you can set **Work/Home** to use these locations instead.*

---



For example, to check for delays on your route home, do the following:

1. Tap **TomTom Traffic** in the Main Menu.
2. Tap **Show home-work traffic**.
3. Tap **Work to home**.

The driving view is shown. If the Traffic sidebar shows any delays on your route, tap the Traffic sidebar and then **Minimise traffic delays** to see your fastest route to home.

## Checking traffic incidents in your area

Get an overview of the traffic situation in your area, using the map. To find local incidents and their details, do the following:



### Browse map

1. Tap **TomTom Traffic** in the Main Menu.
2. Tap **Browse map**.

The map browser screen is shown.

3. Tap the blue compass image in the top right of the screen.

The map centres itself on you current location and any traffic incidents in the area are shown.






4. Tap on any traffic incident to get more information.

A screen is shown that gives you detailed information about the incident you chose. To display information about surrounding incidents use the left and right arrows at the bottom of this screen.

## HD Traffic sidebar colours

The HD Traffic sidebar changes colours depending on how old the traffic information is on your device. The sidebar colours are:

-  **Dark blue** - The traffic information on your device is up to date.
-  **Lilac** - The traffic information on your device has not been updated for at least 10 minutes. HD Traffic still warns you about traffic incidents, but the information is at least ten minutes old.
-  **Grey** - The traffic information on your device has not been updated for at least 15 minutes. HD Traffic will only warn you about traffic incidents once it has been able to update this information.

---

***Note:** The traffic information on your device is updated automatically and the HD Traffic sidebar will normally remain dark blue. However, it is possible that device might not update traffic information, if for example there is no or poor network coverage in your area, or you are driving in a country other than the one for which you purchased TomTom HD Traffic.*

---

## Traffic incidents

Traffic incidents are displayed as small symbols on the Driving View and the HD Traffic sidebar. There are two type of symbols:

- Symbols shown in a red square are incidents that HD Traffic can help you to avoid.

- Symbols shown in a red triangle are weather related and are for information only. You cannot use HD Traffic to avoid them.

Traffic incident symbols:



Accident



Road works



One or more lanes closed



Road closed



Traffic incident



Traffic jam

Weather related symbols:



Fog



Rain



Wind



Ice



Snow



*Note: The incident avoided symbol is shown for any traffic incident that you avoid using TomTom HD Traffic.*

## Traffic menu

To open the Traffic menu, tap the HD Traffic sidebar in the Driving View or tap **TomTom Traffic** in the Main Menu. The following buttons are available:



Minimise traffic delays

Tap this button to re-plan your route based on the latest traffic information.



**Show traffic  
on route**

Tap this button to get an overview of any traffic incidents along your route. Use the left and right buttons of the overview screen to see more detailed information about each incident. You can also use the **Replan** button of the overview screen to replan your route avoiding the traffic incidents.



**Show home-  
work traffic**

Tap this button to calculate and show the quickest route from your home location to your place of work and back.



**Browse map**

Tap this button to browse the map and see the traffic information displayed on the map.



**Change  
Traffic  
preferences**

Tap this button to change your preferences for how TomTom HD Traffic works on your device.

---

## 19. TomTom Safety Alerts

---



The TomTom Safety Alerts service warns you about a variety of locations including:

- Safety camera locations.
- Accident blackspot locations.
- Mobile safety camera locations.
- Average speed camera locations.
- Toll road camera locations.
- Traffic light camera locations.

---

**Important:** Regularly connect your navigation device to TomTom HOME to update the list of locations for all Safety Alerts. If a wireless connection is available for your device, mobile safety camera locations can be sent to your device using a wireless connection.

---

When a safety camera location is shown on the map, a warning sound is played to warn you that you are approaching an area where a safety camera is located.

If you discover a location that has a safety camera but you receive no warning, you can report the new location to TomTom using your XL.

### Safety camera warnings

Warnings are given 15 seconds before you reach a safety camera location.

You are warned in three ways:

- Your TomTom XL plays a warning sound.
- The type of safety camera and your distance from the camera location is shown in the Driving View. If a speed restriction that has been reported for the camera, the speed is also shown in the Driving View.
- The location of the safety camera is shown on the map.

## Changing the way you are warned



To change the way your TomTom XL warns you about safety cameras, tap the **Change warning preferences** button.

You can then set how close you want to be to a safety camera before you are warned and what type of sound will be played.

For example, to change the sound that is played when you approach a fixed safety camera, do the following:

1. Tap **TomTom Safety Cameras** in the Main Menu.
2. Tap **Change warning preferences**.

A list of safety camera types is displayed. A speaker is shown next to the speed camera types that have been set for an alert.

3. Tap **Fixed safety cameras**.

---

**Tip:** If you want to change the warning sounds for all camera types to a single sound, tap **<ALL>** instead of **Fixed safety cameras** in step 4 above.

---

4. Tap **NO** to avoid removing the fixed safety camera alerts.
5. Enter the time in seconds for when a warning is given before you reach a camera. Then tap **OK**.
6. Tap the sound you want to be used for the warning. For example, to select a bugle sound tap on **Bugle**.
7. Tap **YES** to save your changes.

## Report button

To show the report button in the Driving View, do the following:

1. Tap **TomTom Services** in the Main Menu.
2. Tap **TomTom Safety Cameras**.
3. Tap **Enable report button**.

The report button is shown on left-hand side of the Driving View or if you are already using the quick menu, it's added to the buttons available in the quick menu.

## Reporting a new safety camera while on the move

1. Tap the report button shown in the Driving View or in the quick menu to record the location the camera.
2. Tap **Mobile camera** or **Fixed camera**.
3. Tap the type of camera you want to report.

---

**Note:** If the type of camera you choose has a speed restriction, you can also enter the speed.

---

## Reporting a new safety camera while at home

You do not need to be at the location of a safety camera to report the new location.



To report a new safety camera location while you are at home, do the following:

1. Tap **TomTom Services** in the Main Menu.
2. Tap **TomTom Safety Cameras**.
3. Tap **Report safety camera**.
4. Tap **Mobile camera** or **Fixed camera** depending upon the type of safety camera.
5. Find the location of the camera you want to report using the Map browser, .  
Use the cursor to mark the exact location, then tap **Done**.
6. Tap on the type of camera you want to report and if necessary, the speed restriction for the camera.

## Reporting incorrect camera alerts

You may receive an alert for a camera that is no longer there.

To report an incorrect camera alert, do the following:

1. While you are at the location of the missing camera, tap **Report** in the Driving View.

---

**Note:** This must be done within 20 seconds of receiving the camera alert.

---

2. Tap **Remove**.

The next time you connect your device to TomTom HOME, the camera alert is reported as incorrect.

## Types of safety camera you can report

When you report a safety camera, you can select the type of safety camera you are reporting.

These are the different types of Safety camera:



**Speed camera**

This type of safety camera checks the speed of passing vehicles.



**Traffic light camera**

This type of safety camera checks for vehicles breaking traffic rules at traffic lights.



**Toll road camera**

This type of safety camera monitors traffic at toll road barriers.



**Average speed check**

This type of safety camera checks the average speed vehicles between two fixed points.

---



**Vehicle restriction**

This type of safety camera checks traffic on roads where access is restricted.



**Other camera**

All other types of camera that do not fall into any of the above categories.

---

## TomTom Safety Camera menu

To open the Safety Cameras menu, tap the **TomTom Services** in the Main Menu and then tap **TomTom Safety Cameras**.



**Report safety camera**

Tap this button to report a new safety camera location.



**Change warning preferences**

Tap this button to set the safety alerts you will receive and which sounds will be used for each alert.



**Disable alerts**

Tap this button to disable safety alerts.



**Enable automatic updates**

Tap this button to enable automatic updates for your list of mobile safety camera locations. The list of fixed safety cameras is not updated automatically as they don't change as often as mobile cameras.



**Enable report button**

Tap this button to enable the report button. The report button is shown in the Driving View or in the quick menu.

---

## 20. Fuel Prices

---



The Fuel Prices service sends up-to-date information about fuel prices directly to your device or via TomTom HOME when your XL is connected to your computer.

### Search for the best fuel prices

To search for the cheapest fuel prices, do the following. In this example, you will plan a route to the cheapest petrol station nearby.

1. Tap the screen to bring up the Main Menu, then tap **TomTom Services**.
2. Tap **Fuel Prices**.
3. Select the type of fuel used in your vehicle.
4. Tap **Cheapest nearby**, then tap the name at the top of the list.

The location is shown on the map.

5. Tap **Select**.

You are asked if you want to navigate to the petrol station.

6. Tap **Yes**.

You may be asked if you need to arrive at a particular time, if this option is enabled.

The route is planned and a summary of the route is shown on the map.

## 21. Introducing TomTom HOME

---

TomTom HOME is a free application for your computer that helps you manage the contents of your TomTom XL navigation device. It is a good idea to frequently connect to HOME to ensure you always have the latest updates on your device.

You can, for example, do the following:

- Manage maps, voices, POIs and more.
- Buy TomTom services and manage your subscriptions.
- Update your device automatically with the latest software and services.
- Make and restore backups.
- Read the full version of the user manual.

---

**Tip:** We recommend using a broadband internet connection whenever you connect to HOME.

It is a good idea to make regular backups of your navigation device using HOME.

---

### Installing TomTom HOME

To install TomTom HOME on your computer, do the following:

1. Connect your computer to the internet.
2. Connect your device to your computer using the USB cable, then switch your device on.

HOME starts to install.

---

**Note:** If HOME does not install automatically, you can also download it from [tomtom.com/home](http://tomtom.com/home)

---

TomTom HOME starts automatically when the navigation device is switched on while the device is connected to your computer.

### MyTomTom Account

To download content and services using TomTom HOME, you need a MyTomTom account. You can create an account when you start using TomTom HOME.

## 22. Addendum

---

### Important Safety Notices and Warnings

#### Global Positioning System

The Global Positioning System (GPS) is a satellite-based system that provides location and timing information around the globe. GPS is operated and controlled under the sole responsibility of the Government of the United States of America which is responsible for its availability and accuracy. Any changes in GPS availability and accuracy, or in environmental conditions, may impact the operation of your TomTom device. TomTom does not accept any liability for the availability and accuracy of GPS.

#### Use with Care

Use of a TomTom device for navigation still means that you need to drive with due care and attention.

#### Aircraft and Hospitals

Use of devices with an antenna is prohibited on most aircraft, in many hospitals and in many other locations. A TomTom device must not be used in these environments.

### Taking care of your TomTom device

Do not leave your TomTom device or TomTom accessories on view when you leave your car. They may become an easy target for thieves.

You can set a password for your device which must be entered every time you start your device.

We recommend that you use the safety preferences on your TomTom device, where available. The safety preferences are available in the Preferences menu.

Take care of your TomTom device and clean it correctly.

- Use a soft cloth to wipe the screen of your device; do not use any liquid cleaners.
- If your device gets wet, dry it with a soft cloth.
- Do not open the casing of your device under any circumstances. Doing so may be dangerous and will invalidate your warranty.
- If your device includes a memory card, do not use the memory card with any device other than a TomTom device. Other devices may damage the memory card.
- Do not expose your device to high or low temperatures, which can cause permanent damage. For example, don't leave it in the car on hot summer days or during cold winter nights.

## Battery

This product uses a Lithium-Ion battery. Do not use it in a humid, wet and/or corrosive environment. Do not put, store or leave your product in or near a heat source, in a high temperature location, in strong direct sunlight, in a microwave oven or in a pressurized container, and do not expose it to temperatures over 60 C (140 F). Failure to follow these guidelines may cause the Lithium-Ion battery to leak acid, become hot, explode or ignite and cause injury and/or damage. Do not pierce, open or disassemble the battery. If the battery leaks and you come into contact with the leaked fluids, rinse thoroughly with water and seek medical attention immediately. For safety reasons, and to prolong the lifetime of the battery, charging will not occur at low (below 0 C/32 F) or high (over 45 C/113 F) temperatures.

Temperatures: Standard operation: -10 C (14 F) to +55 C (131 F); short period storage: -20 C (-4 F) to + 60 C (140 F); long period storage: -20 C (-4 F) to +25 C (77 F).



THE LITHIUM-ION BATTERY CONTAINED IN THE PRODUCT MUST BE RECYCLED OR DISPOSED OF PROPERLY. USE YOUR TOMTOM ONLY WITH THE SUPPLIED DC POWER LEAD (CAR CHARGER/ BATTERY CABLE) AND AC ADAPTER (HOME CHARGER) FOR BATTERY CHARGING.

To recycle your TomTom unit please see your local approved TomTom service center.

The stated battery life is a maximum possible battery life. The maximum battery life will only be achieved under specific atmospheric conditions. The estimated maximum battery life is based on an average usage profile.

For tips on extending the battery life, go to the FAQ listed below for your country:

AU: [www.tomtom.com/8703](http://www.tomtom.com/8703)  
CZ: [www.tomtom.com/7509](http://www.tomtom.com/7509)  
DE: [www.tomtom.com/7508](http://www.tomtom.com/7508)  
DK: [www.tomtom.com/9298](http://www.tomtom.com/9298)  
ES: [www.tomtom.com/7507](http://www.tomtom.com/7507)  
FI: [www.tomtom.com/9299](http://www.tomtom.com/9299)  
FR: [www.tomtom.com/7506](http://www.tomtom.com/7506)  
HU: [www.tomtom.com/10251](http://www.tomtom.com/10251)  
IT: [www.tomtom.com/7505](http://www.tomtom.com/7505)  
NL: [www.tomtom.com/7504](http://www.tomtom.com/7504)  
PL: [www.tomtom.com/7503](http://www.tomtom.com/7503)  
PT: [www.tomtom.com/8029](http://www.tomtom.com/8029)  
RU: [www.tomtom.com/10250](http://www.tomtom.com/10250)  
SE: [www.tomtom.com/8704](http://www.tomtom.com/8704)  
UK: [www.tomtom.com/7502](http://www.tomtom.com/7502)  
US: [www.tomtom.com/7510](http://www.tomtom.com/7510)

## CE Marking

This equipment complies with the requirements for CE marking when used in a residential, commercial, vehicular or light industrial environment.

**CE0168**

## R&TTE directive

Hereby, TomTom declares that this personal navigation device is in compliance with the essential requirements and other relevant provisions of the EU Directive 1999/5/EC. The declaration of conformity can be found here: [www.tomtom.com/legal](http://www.tomtom.com/legal).

## WEEE directive



This symbol on the product or its packaging indicates that this product shall not be treated as household waste. In line with EU Directive 2002/96/EC for waste electrical and electronic equipment (WEEE), this electrical product must not be disposed of as unsorted municipal waste. Please dispose of this product by returning it to the point of sale or to your local municipal collection point for recycling.

## Connected networks

Devices that contain a GSM module are intended for connection to the following networks:

GSM/GPRS 900/1800/1900

## Safety Notice

Your TomTom navigation device contains a GSM/GPRS module which can interfere with electrical devices such as cardiac pacemakers, hearing aids and aviation equipment.

Interference with these devices may endanger the health or life of others.

Do not use near unprotected electrical units nor in areas where the use of mobile telephones is prohibited, such as hospitals and airplanes.

## This Document

Great care was taken in preparing this manual. Constant product development may mean that some information is not entirely up to date. The information in this document is subject to change without notice.

TomTom shall not be liable for technical or editorial errors or omissions contained herein; nor for incidental or consequential damages resulting from the performance or use of this material. This document contains information protected by copyright. No part of this document may be photocopied or reproduced in any form without prior written consent from TomTom International B.V.

## 23. Copyright notices

---

---

© 2009 TomTom N.V., The Netherlands. TomTom®, and the "two hands" logo, among others, are Trademarks owned by TomTom N.V. or one of its subsidiaries. Please see [www.tomtom.com/legal](http://www.tomtom.com/legal) for warranties and end user licence agreements applying to this product.

---

---

© 2009 TomTom International BV, Niederlande. TomTom™ und das Logo mit den »zwei Händen« gehören zu den Warenzeichen, Anwendungen oder registrierten Markenzeichen von TomTom International B.V. Für dieses Produkt gelten unsere eingeschränkte Garantie und unsere Endnutzerlizenzvereinbarung für integrierte Software, die Sie beide auf [www.tomtom.com/legal](http://www.tomtom.com/legal) einsehen und nachlesen können.

---

---

© 2009 TomTom International BV, The Netherlands. TomTom™ et le logo TomTom ("deux mains") comptent parmi les marques commerciales, les applications ou les marques déposées de TomTom International B.V. L'utilisation de ce produit est régie par notre garantie limitée et le contrat de licence utilisateur final relatif aux logiciels embarqués ; vous pouvez consulter ces deux documents à l'adresse suivante : [www.tomtom.com/legal](http://www.tomtom.com/legal).

---

---

© 2009 TomTom International BV, Nederland. TomTom™ en het "twee-handenlogo" maken onderdeel uit van de handelsmerken, applicaties of geregistreerde handelsmerken in eigendom van TomTom International B.V. Op dit product zijn onze beperkte garantie en licentieovereenkomst voor de eindgebruiker van toepassing; beide zijn te vinden op [www.tomtom.com/legal](http://www.tomtom.com/legal).

---

---

© 2009 TomTom International BV, The Netherlands. TomTom™ e il logo delle "due mani" fanno parte dei marchi, delle applicazioni e dei marchi registrati di proprietà di TomTom International B.V. La nostra garanzia limitata e il contratto di licenza per l'utente finale vengono applicati a questo prodotto, è possibile consultarli entrambi all'indirizzo [www.tomtom.com/legal](http://www.tomtom.com/legal).

---

---

© 2009 TomTom International BV, Países Bajos. TomTom™ y el logotipo "dos manos" son marcas comerciales, aplicaciones o marcas registradas de TomTom International B.V. Nuestra garantía limitada y nuestro acuerdo de licencia de usuario final para el software integrado son de aplicación para este producto; puede consultar ambos en [www.tomtom.com/legal](http://www.tomtom.com/legal).

---

---

© 2009 TomTom International BV, Países Baixos. TomTom™ i el logotip amb les "dues mans" formen part de les marques comercials, aplicacions o marques comercials registrades propietat de TomTom International B.V. La

---



*nostra garantia limitada i l'acord de llicència per a usuaris finals per al programari inclòs són aplicables a aquest producte. Podeu consultar ambdós documents a [www.tomtom.com/legal](http://www.tomtom.com/legal)*

---

*© 2009 TomTom International BV, Países Baixos. TomTom™ e o logótipo das "duas mãos" fazem parte das marcas comerciais, aplicações ou marcas comerciais registadas cuja proprietária é a TomTom International B.V. A nossa garantia limitada e contrato de licença de utilizador final relativas ao software incorporado dizem respeito a este produto; pode consultar ambos em [www.tomtom.com/legal](http://www.tomtom.com/legal)*

---

*© 2009 TomTom International BV, Holland. TomTom™ og logoet med "de to hænder" er blandt de varemærker, produkter og registrerede varemærker, der tilhører TomTom International B.V. Vores begrænsede garanti og slutbrugerlicensaftale for indlejret software gælder for dette produkt; begge dokumenter findes på [www.tomtom.com/legal](http://www.tomtom.com/legal)*

---

*2009 TomTom™ ja "two hands" -logo ovat eräitä TomTom International B.V.:n omistamia tavaramerkkejä, sovelluksia tai rekisteröityjä tavaramerkkejä. Rajoitettu takuumme ja loppukäyttäjän käyttösopimuksemme sulautetuille ohjelmistoille koskevat tätä tuotetta; voit tarkastaa molemmat verkkosivuiltamme [www.tomtom.com/legal](http://www.tomtom.com/legal)*

---

*© 2009 TomTom International BV, Nederland. TomTom™ og "de to hendene"-logoen er blant de varemerker, programvarer og registrerte varemerker som eies av TomTom International B.V. Vår begrensede garanti og lisensavtale med sluttbruker for integrert programvare gjelder dette produktet. Du kan lese om begge på [www.tomtom.com/legal](http://www.tomtom.com/legal)*

---

*© 2009 TomTom International BV, Nederländerna. TomTom™ och logotypen "två händer" tillhör de varumärken, programvaror eller registrerade varumärken som ägs av TomTom International B.V. Vår begränsade garanti och vårt slutanvändarlicensavtal för inbyggd programvara kan gälla för denna produkt. Du kan läsa dem båda på [www.tomtom.com/legal](http://www.tomtom.com/legal)*

---

*© 2009 TomTom International BV, Nizozemsko. TomTom™ a logo se dvíma dlaními patřící mezi obchodní značky, aplikace nebo registrované ochranné známky ve vlastnictví společnosti TomTom International B.V. Na tento produkt se vztahuje omezená záruka a smlouva s koncovým uživatelem pro vestavěný software; do obou dokumentů můžete nahlédnout na [www.tomtom.com/legal](http://www.tomtom.com/legal)*

---

*© 2009 TomTom International BV, Hollandia. A TomTom™ és a "két kéz" embléma is a TomTom International B.V. által birtokolt védjegyek, alkalmazások és bejegyzett védjegyek közé tartozik. A korlátozott garancia és a benne foglalt szoftver végfelhasználói licencszerződése érvényes erre a termékre; melyeket a következő helyen tekinthet át: [www.tomtom.com/legal](http://www.tomtom.com/legal)*

---

*© 2009 TomTom International BV, Holandia. Znak TomTom™ i logo z dwiema d³oñmi należą do znaków handlowych, aplikacji lub zastrzeżonych znaków handlowych, których właścicielem jest firma TomTom International B.V. Do niniejszego produktu zastosowanie ma umowa licencyjna dla końcowego*

użytkownika produktu oraz ograniczona gwarancja na wbudowane oprogramowanie; oba dokumenty można przejrzeć na stronie [www.tomtom.com/legal](http://www.tomtom.com/legal)

---

© 2009 TomTom International BV, Holandsko. TomTom™ a logo s "dvoma rukami" patria medzi ochranné známky, aplikácie alebo registrované ochranné známky vlastnené spoločnosťou TomTom International B.V. Na tento produkt sa vzťahuje obmedzená záruka a dohoda s koncovým užívateľom pre vstavaný softvér; viac informácií o oboch nájdete na [www.tomtom.com/legal](http://www.tomtom.com/legal)

---

© 2009 TomTom International BV, Holland. TomTom™ ja "kahe käe" logo kuuluvad nende kaubamärkide, rakenduste või registreeritud kaubamärkide hulka, mille omanikuks on TomTom International B.V. Sellele tootele kehtib meie piiratud garantii ja lõppkasutaja litsentsileping manustarkvara jaoks; saad tutvuda mõlemaga aadressil [www.tomtom.com/legal](http://www.tomtom.com/legal)

---

© 2009 TomTom International BV, Nyderlandai. TomTom™ ir dviejų rankų logotipas yra TomTom International B.V. vienas iš prekių ženklų, programų arba registruotųjų prekės ženklų. Mūsų ribota garantija ir galutinio naudotojo sutartis naudotis įdėtąja programine įranga taikoma šiam produktui; galite peržiūrėti abu dokumentus svetainėje [www.tomtom.com/legal](http://www.tomtom.com/legal)

---

© 2009 TomTom International BV, Nyderlandai. TomTom™ ir dviejų rankų logotipas yra TomTom International B.V. vienas iš prekių ženklų, programų arba registruotųjų prekės ženklų. Mūsų ribota garantija ir galutinio naudotojo sutartis naudotis įdėtąja programine įranga taikoma šiam produktui; galite peržiūrėti abu dokumentus svetainėje [www.tomtom.com/legal](http://www.tomtom.com/legal)

---

© 2009 TomTom International BV, Hollanda. TomTom™ ve "two hands" logoları TomTom International B.V.'ye ait ticari marka, uygulama veya kayıtlı ticari markalardır. Sınırlı garantimiz ve katıştırılmış yazılımın son kullanıcı lisans sözleşmesi bu ürün içindir; [www.tomtom.com/legal](http://www.tomtom.com/legal) adresinden ikisine de göz atabilirsiniz

---

© 2009 TomTom International BV, Holanda. TomTom™ e o logotipo de "duas mãos" estão entre as marcas comerciais, aplicativos ou marcas registradas possuídas pela TomTom International B.V. Nossa garantia limitada e acordo de licenciamento do usuário final para o software incluído se aplicam para este produto; ambos podem ser vistos em [www.tomtom.com/legal](http://www.tomtom.com/legal)

---

#### Data Source

© 2009 Tele Atlas N.V. Based upon:

Topografische ondergrond Copyright © dienst voor het kadaster en de openbare registers, Apeldoorn 2006.

© Ordnance Survey of Northern Ireland.

© IGN France.

© Swisstopo.

© BEV, GZ 1368/2003.

© Geonext/DeAgostini.

© Norwegian Mapping Authority, Public Roads Administration / © Mapsolutions.

© DAV, violation of these copyrights shall cause legal proceedings.

*This product includes mapping data licensed from Ordnance Survey with the permission of the Controller of Her Majesty's Stationery Office. © Crown copyright and/or database right 2009. All rights reserved. Licence number 100026920.*

© Roskartographia

---

---

*Some images are taken from NASA's Earth Observatory.*

*The purpose of NASA's Earth Observatory is to provide a freely-accessible publication on the Internet where the public can obtain new satellite imagery and scientific information about our home planet.*

*The focus is on Earth's climate and environmental change:  
[earthobservatory.nasa.gov/](http://earthobservatory.nasa.gov/)*

---